



**THE
WORLD
SPA
DESIGN**

**HOTEL SPAS
& BEAUTY
& SPAS
WELLNESS
CENTERS
INTERIOR
DESIGN
Vol.2**



Akatsuki Resort

Title: Akatsuki Resort
Design Agency: Riccardo Tossani Architecture
Location: Lipa Noi Beach, Koh Samui, Thailand
Client: Chartered Holidays Ltd.
Area: 950 m²
Photography: Martyn Goodacre



Introduction:

The basic concept responds in a synchronous way to the cultures of the locality and client, the wonders of the site and climate, and a deeply rooted conviction that with good sustainable design and an understanding of vernacular planning traditions, then comfort, privacy and a memorable experience can be derived from minimal dependence on artificial energy. The site sits on a beach facing five rock islands across a lagoon, and a series of infinity pools cascade down from a grand entrance pavilion to the beach lawn, with private habitation and amenity pavilions either side, reflecting the ocean view beyond.

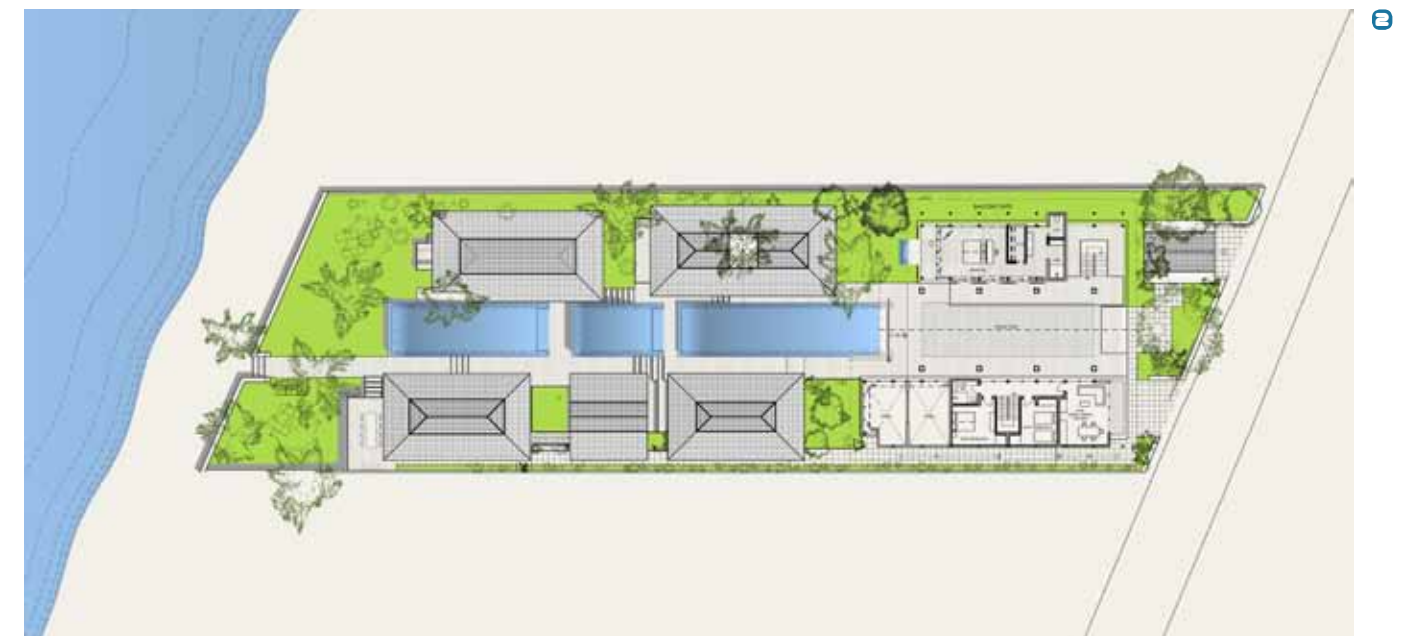
The spa and hospitality pavilions, in the tradition of local vernacular, rely heavily on natural ventilation and shade for comfort, and the vertical louver sliding screens which

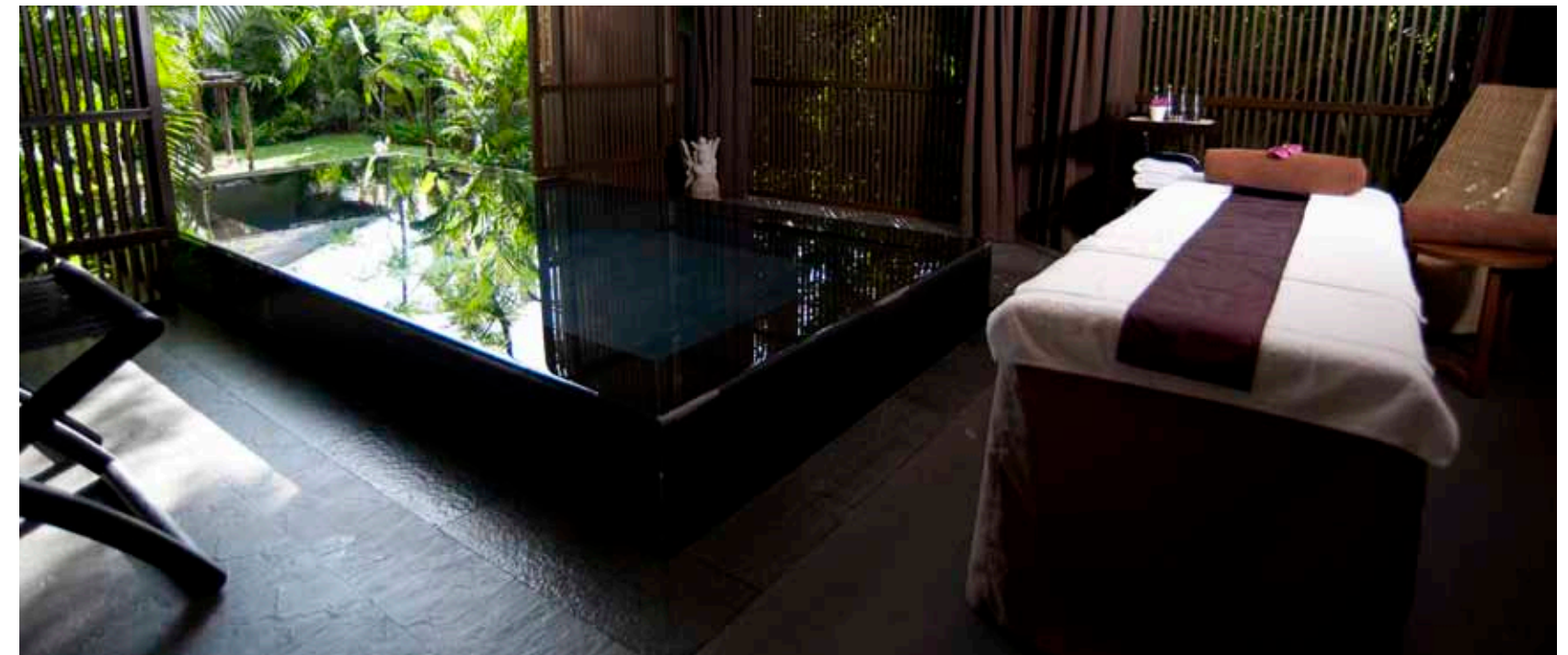
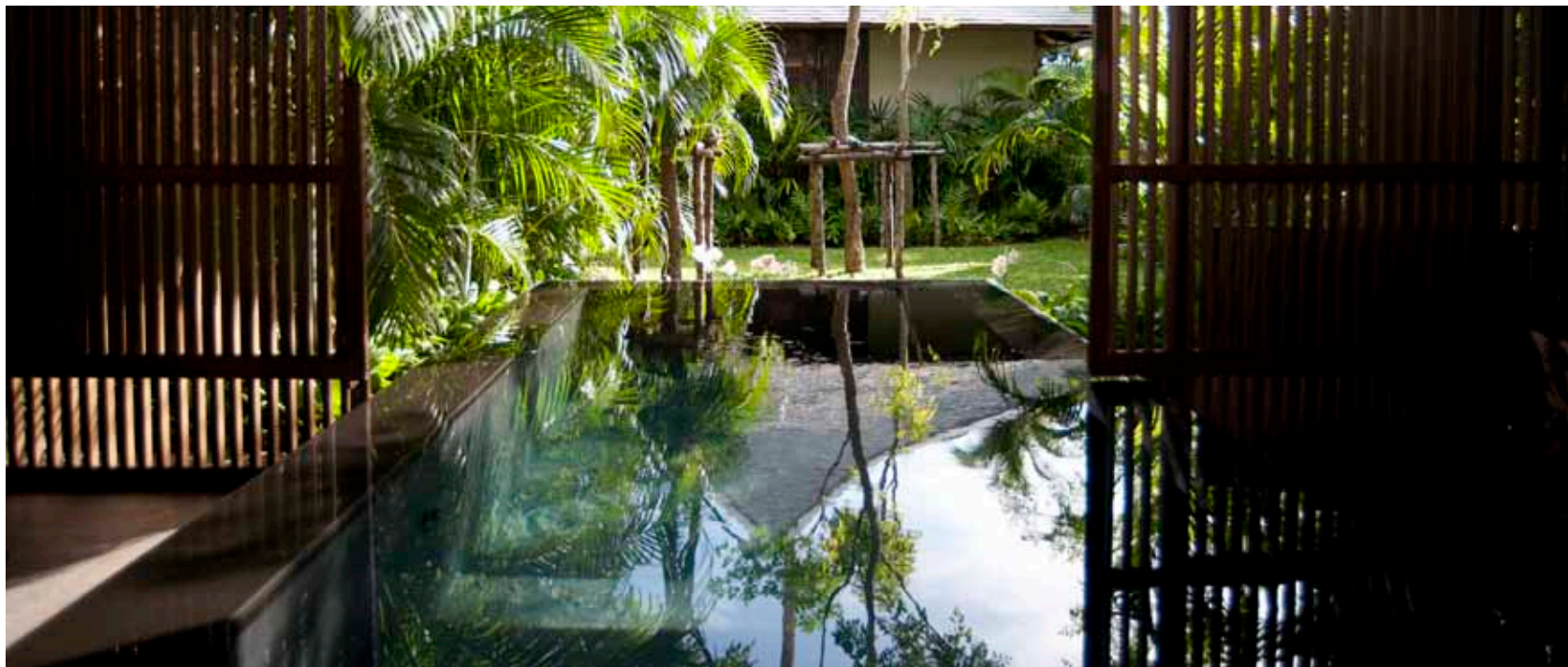
wrap around every building volume are derived from Japanese architecture, and provide privacy while retaining views. The strong verticality of these screens becomes the principal architectural motif, which when integrated with the lush gardens, capped by the steep Thai double-pitched shingle roofs and reflected collectively in the pools, makes for an ethereal experience of light and shadows.

The mix of Japanese and Thai design influences is unusual and is intended to provide elements of familiarity for visitors from Japan so as to make them feel more comfortable and a little less far from home. Japan is an archipelago that spans multiple climatic zones, and has seen the development of architectural traditions and historic building technologies that have a

universal application. These include the sliding shoji screen that enable spaces to adapt and transform easily to changing circumstances, such as room use, family size, weather fluctuations, garden integration, and so forth. These techniques are directly applicable to a resort habitation setting and compatible with Thai architectural styles, which while less driven by changing weather than Japan's temperate environments nevertheless are very responsive to climate, function and change. Deep eaves for shade, steep roofs to deflect torrential downpours, integration with lush tropical gardens and elegant, sparing use of materials and color are a Japanese stylistic manner that resonates perfectly with Thai vernacular architectural traditions.











Riccardo Tossani Architecture

Riccardo Tossani Architecture (RTA) specializes in urban design, architecture and interior design. Their work is founded on research with the goal of understanding regional history, culture and environment and they are renowned for developing new architectural vocabularies that are at the same time contemporary and forward looking, as well as reflective of vernacular history and tradition.

RTA was established in Tokyo in 1997 by architect-urban designer Riccardo Tossani and interior architect Atsuko Itoda. Riccardo Tossani, Architecture (RTA) has master planned a number of hotel, resort and residential communities as well as retail stores and private residences in Japan, Italy, Hong Kong, Thailand, Australia and the US. They are led by design principle Riccardo Tossani, a graduate of Harvard University's Graduate School of Design and Atsuko Itoda, chief interior architect and managing partner. Itoda is a graduate of the prestigious Joshibi (Tokyo Women's University of Fine Arts), and has practiced with leading design firms in the US and Japan.

RTA's work is recognized internationally and is regularly published in design journals around the world.